

EUROPEAN POLIO CONFERENCE //

PROGRAMME

COPENHAGEN DENMARK AUGUST 31 – SEPTEMBER 2, 2011

POST POLIO SYNDROME – a challenge of today

European Polio Union

- An umbrella organization for polio organizations in Europe

60 percent of all people who have had Polio will develop Post Polio Syndrome. This concerns approximately 700,000 Europeans. EPU strives for all Europeans with Post Polio Syndrome to have the best possibilities to lead full active, independent and integrated lives.

Our objectives are:

- Encourage coordinated research about Post Polio Syndrome
- Create an international web site for data in relation to polio and Post Polio Syndrome
- Produce a validated information bank of positive help to arrest the deterioration of people with Post Polio Syndrome
- Campaign to ensure the need for continued polio-vaccination programs

For further information about EPU or to make a donation, please visit our website: www.europeanpolio.eu



CONTENT:

WELCOME	4
INVITED SPEAKERS	7
PROGRAMME	8
PROGRAMME AT A GLANCE	9
PROGRAMME WEDNESDAY AUGUST 31st	11
PROGRAMME THURSDAY SEPTEMBER 1st	12
PROGRAMME FRIDAY SEPTEMBER 2nd	14
FILM: THE EPIDEMIC	15
POSTERPRESENTATIONS	16
SOCIAL EVENTS	18
HOW TO REACH THE CONFERENCE VENUE	19

WELCOME

The European Polio Union (EPU) welcomes you to the European Post Polio conference in Copenhagen. EPU wishes with this conference to bring focus on the challenges polio survivors all over the world meet, when they later in life experience pain and a decrease in muscle strength and functional capacity. This conference invites the leading researchers and experts in the field of post polio syndrome, and the conference will give health care professionals a possibility to exchange new research results and to debate relevant topics on a professional level and hopefully spread the knowledge about the problems of polio survivors to the health sector in their countries. We also wish to give polio survivors a possibility to achieve and exchange new knowledge on assessment, treatment and coping and to increase the awareness of post polio syndrome in the political systems.

TARGET GROUP

- **Health care professionals:** Researchers, specialists in rehabilitation medicine, neurologists and other doctors, physical therapists, occupational therapists, nurses, psychologists, social advisors, orthotists or other professionals, who are involved with or treat polio survivors
- **Polio survivors and their relatives**

CONFERENCE SITE

Hotel Crowne Plaza Copenhagen Towers
Ørestads Boulevard 114 - 118
DK 2300 Copenhagen S, Denmark

CONFERENCE OFFICE

Merete Bertelsen
mbe@ptu.dk
Tel: +45 36 73 90 44
Hotline August 29 - September 2: +45 23 88 57 14

CONFERENCE ORGANIZER FOR HOTEL ACCOMMODATION

International Conference Services
reservations@ics.dk

SCIENTIFIC COMMITTEE//

Frans Nollet, MD, The Netherlands
(Chairman)
Kristian Borg, MD, Sweden
Jan Lexell, MD, Sweden
Lise Kay, MD, Denmark
Marianne de Visser, MD, The Netherlands
Antonio Toniolo, MD, Italy
Laura Bertolasi, MD, Italy

Arzu On, MD, Turkey
Alain Yelnik, MD, France
Merete Bertelsen, PT, Denmark

And 2 EPU representatives:

Els Symons, The Netherlands
John McFarlane, Ireland

ACKNOWLEDGEMENTS

The European Polio Union (EPU) and The Danish Society of Polio and Accident Victims (PTU) thank the scientific committee for planning the scientific content of this conference.

EPU and PTU thank all the researchers, who have contributed to the scientific content by giving speeches or by submitting abstracts and presenting posters.

EPU and PTU thank the funds who have supported the conference financially:

Den Georg Bruunske Fond, I.F.Lemvig Müllers Fond, Jascha Fonden,

and the firms who have supported the conference in different ways: Grifols, PHI, Otto Bock, Jan Nielsen, Sahva, Fior & Gentz, Camp Scandinavia, Pfizer, Bus company Harbirk and Formuepleje.

The logo for Grifols, featuring the word "GRIFOLS" in a bold, blue, sans-serif font.The logo for Fior & Gentz, consisting of the words "FIOR & GENTZ" in white, uppercase letters on a dark blue background, with "ORTHOPÄDIETECHNIK MIT SYSTEM" in smaller white letters below.The logo for Post-Polio Health International, with "POST-POLIO HEALTH" in a serif font and "INTERNATIONAL" in a smaller sans-serif font below it.

POST-POLIO HEALTH INTERNATIONAL
INCLUDING INTERNATIONAL VENTILATOR USERS NETWORK

The Otto Bock logo, featuring the name "Otto Bock" in a blue, cursive script font, with "QUALITY FOR LIFE" in a bold, black, sans-serif font below it.The Sahva logo, featuring the word "Sahva" in a large, red, serif font, with the tagline "Et liv i bevægelse" in a smaller, red, sans-serif font below it.The Camp Scandinavia logo, featuring the word "CAMP" in a large, blue, sans-serif font, with "SCANDINAVIA" in a smaller, blue, sans-serif font below it.The Formuepleje logo, featuring the words "FORMUE PLEJE" in white, uppercase letters on a dark red background.

DISCLAIMER

The organizing committee and ICS accept no liability for any injuries/losses incurred by participants and/or accompanying persons, nor loss of, or damage to, any luggage and/or personal belongings.



GRIFOLS a new era begins

Combining expertise

Grifols and Talecris have embarked on a new and exciting era in the development and production of plasma-derived protein therapies. The newly energized Grifols will build upon our companies' respective 70-year histories of innovation and scientific expertise to bring expanded therapeutic options and innovative healthcare solutions to patients worldwide.

INVITED SPEAKERS

Alain Yelnik MD, France
Alice Bickerstaffe MD, The Netherlands
Anders Stenström MD, Sweden
Anita Beelen PhD, The Netherlands
Anna-Lene Hartvigsen PT, Denmark
Anna Lisa Thoren Jönsson OT, Sweden
Antonio Toniolo MD, Italy
Arzu On MD, Turkey
Barbara Bocker MD, Germany
Carin Willén PT, Sweden
Claus Vinther Nielsen MD, Denmark
Deidre Murray PT, Ireland
Elisabeth Farbu MD, Norway
Eric Voorn MSc, The Netherlands
Esther Boserup PTU, Denmark
Fieke Koopmann MD, The Netherlands
Frans Nollet MD, The Netherlands
Gunilla Östlund Psych, Sweden
Holger Kallehauge PTU, Denmark
Irene Tersteeg MD, The Netherlands
Jan Lexell MD, Sweden

Joan Headley Director PHI, USA
John McFarlane, Chair PPSG, Ireland
Julide Oncu MD, Turkey
Karen Schipper Psychologist, The Netherlands
Katharina Sunnerhagen MD, Sweden
Kees Noppe Orthotist, The Netherlands
Kirsten Avlund OT, Denmark
Kjeld Møller Pedersen health economist, Denmark
Kristian Borg MD, Sweden
Laura Bertolasi MD, Italy
Lise Kay MD, Denmark
Marianne de Visser MD, The Netherlands
Merel Brehm PhD, The Netherlands
Michael Laub MD, Denmark
Peter Bundgaard Rotary, Denmark
Rebecca Martin, WHO
Selma Calmes MD, USA
Sylvi Salomonsen RTP, Sweden
Svend Prytz MD, Denmark
Troels Staehelin Jensen MD, Denmark

MD: Medical doctor
PT: Physical therapist
OT: Occupational therapist
Msc: Master of Science
PTU: Danish Society of Polio and Accident Victims
RTP: The Swedish Association for Survivors of Accident and Injury
PPSG: Post Polio Support Group
WHO: World Health Organization

PROGRAMME

DIVIDED SESSIONS FOR POLIO SURVIVORS AND PROFESSIONALS

Some of the sessions at the conference will be primarily for polio survivors or primarily for health care professionals. It will mainly be the same topics in the track for polio survivors and for the health care professionals. The purpose of the division is, that we want the information for polio survivors to be held in an understandable language for non professionals. These sessions will be translated in to Danish, French and German. The sessions for health care professionals will be in a medical language and the sessions will give the professionals an opportunity to discuss and exchange knowledge on a professional level. The sessions for health care professionals will be held in English only.

The programme may change because of unforeseen incidents.

VIDEOS

Videos from speeches in the track primarily for polio survivors will be available on www.informed-scientist.org and through a link on the conference website (www.polioconference.com) and from EPU's website (www.euro-peanpolio.eu) two weeks after the conference.

REGISTRATION & INFORMATION

Registration and information take place in the hotel reception.

Opening hours:

Wednesday	08.30 - 16.45
Thursday	08.30 - 9.00 and in breaks
Friday	08.30 - 9.00 and in breaks

READING THE PROGRAMME

COLOUR CODES



Session for all participants
Translation into Danish, German and French



Session primarily for polio survivors
Translation into Danish, German and French



Session primarily for health care professionals
No translation



Social events



Registration, breaks, exhibition and poster viewing

TOPIC NUMBERS

Numbers in front of topics refer to summary numbers in Supplement of Journal of Rehabilitation Medicine 2011; Suppl. 49.

LOCATIONS:

Basement floor: Everest 1 & Everest 2
2nd floor: Loch Ness & Lake Geneva

PROGRAMME AT A GLANCE

	WEDNESDAY / AUGUST 31st	THURSDAY / SEPTEMBER 1st	FRIDAY / SEPTEMBER 2nd
9.00 – 10.00	Registration from 8.30 / Coffee	Location: Everest 1 Recent research and initiatives	Location: Everest 1 Latest news in orthotics
10.00 – 10.30	Opening ceremony Location: Everest 1 & 2	Location: Everest 2 Recent research	Location: Everest 2 Recent research
10.30 – 12.00	General perspectives on polio Location: Everest 1 & 2	Symptoms and management 1 Outcome measures	Rehabilitation Location: Everest 1 & 2
12.00 – 13.00	Lunch Exhibition / poster viewing	Lunch Exhibition / poster viewing	Lunch Exhibition / poster viewing
13.00 – 14.30	Location: Everest 1 Improving world wide network	Symptoms and management 2 Symptoms and management 1	Awareness of post polio in the political and social system / Location: Everest 1 & 2
14.30 – 15.00	Coffee Exhibition / poster viewing	Coffee Exhibition / poster viewing	Coffee Exhibition / poster viewing
15.00 – 16.30	Pathophysiology, Pharmacological re-search and treatment	Symptoms and management 3 Lake Geneva Film: The Epidemic	15.30: Sightseeing in Copenhagen by bus (2,5 hours)
16.40	Patient assessment	Loch Ness Networking for health care professionals	
18.00	18.00: Reception at City Hall of Copenhagen		
			19.30: Dinner at Hotel Crowne Plaza

3 weeks rehabilitation in Copenhagen

PTU Rehabilitation Center offers specialized multidisciplinary rehabilitation treatment for persons with polio and other physical disabilities

The 3 week program comprises:

- Assessment and treatment by neurologist, physiotherapist, occupational therapist, psychologist
- Individualized exercising programme
- Group exercises sessions
- Technical aids counseling
- Exercise and relaxation in warm pool
- Free access to the training facilities
- Free use of technical aids
- Free use of massage chair
- Accommodation and all meals

For more information
visit our website:
www.ptu.dk/english

or contact PTU:
mail: ptu@ptu.dk /
phone: +45 3673 9000

ptu ● ● ●

LIFE AFTER THE ACCIDENT

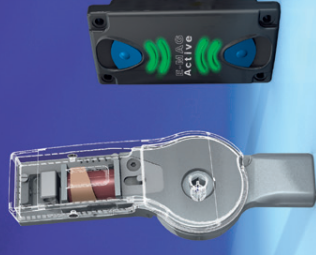
PTU • The Danish Society of Polio and Accident Victims • Fjeldhammervej 8, 2610 Rødovre, Copenhagen, Denmark

Otto Bock®

QUALITY FOR LIFE



E-MAG Active



Står stabilt
og med fri
bevægelse
ved gang

E-MAG Active er et ledssystem til individuelt producerede ortoser. Det har en seljusterende software og fungerer uafhængigt af ankelleddet.

Otto Bock Scandinavia AB • www.ottobock.dk

WEDNESDAY AUGUST 31st 2011

08.30 – 10.00	REGISTRATION / COFFEE
10.00 – 10.40	<p>OPENING CEREMONY IN PLENARY / Location: Everest 1 & 2 Welcoming by President of PTU, HOLGER KALLEHAUGE; President of EPU, JOHAN BIJTTEBIER & the Danish health minister BERTEL HAARDER</p>
10.40 – 12.00	<p>GENERAL PERSPECTIVES ON POLIO / Location: Everest 1 & 2 Moderators: KRISTIAN BORG & HOLGER KALLEHAUGE 1: Progress of the eradication of polio from WHO's perspective / REBECCA MARTIN, WHO 2: The story behind the polio eradication campaign / PETER BUNDGAARD, ROTARY 3: Post polio syndrome, overview of current knowledge / FRANS NOLLET, MD</p>
12.00 – 13.00	LUNCH & EXHIBITION / POSTER VIEWING
13.00 – 14.30	<p>TRACK 1: FOR POLIO SURVIVORS / Location: Everest 1</p> <p>INTERNATIONAL NETWORKING Moderators: ELS SYMONS & AADJE DE GROOT 4: Improving worldwide networking to improve the lives of all survivors / JOHAN BIJTTEBIER, PRESIDENT OF EPU & JOAN HEADLEY, DIRECTOR OF PHI</p>
14.30 – 15.00	COFFEE & EXHIBITION / POSTER VIEWING
15.00 – 16.30	<p>PATHOPHYSIOLOGY, PHARMALOGICAL RESEARCH & TREATMENT Moderators: ELS SYMONS & LISE KAY 5: Pathogenesis of PPS and persistence of poliovirus genomes / ANTONIO TONILOLO, MD 6: Research methodology / FIEKE KOOPMANN, MD 7: Pharmacological treatment & medical precautions / KRISTIAN BORG, MD 8: Personal experience with IVIG treatment / ESTHER BOSERUP Questions and discussion</p>
18.00 – 19.00	RECEPTION AT CITY HALL OF COPENHAGEN

TRACK 2: FOR HEALTH CARE PROFESSIONALS / Location: Everest 2

PATHOPHYSIOLOGY, PHARMALOGICAL RESEARCH & TREATMENT

This session is sponsored by GRIFOLS

Moderators: MARIANNE DE VISSER & KATHARINA SUNNERHAGEN

9: Pathogenesis of PPS and persistence of poliovirus genomes / ANTONIO TONILOLO, MD

10: Immune modulation and a potential biomarker / KRISTIAN BORG, MD

11: Treatment for PPS: Results from a Cochrane review / FIEKE KOOPMANN, MD

12: Revised EFNS guidelines for diagnosis and management of PPS / ELISABETH FARBU, MD

Questions and discussion

PATIENT ASSESSMENT

Moderators: FRANS NOLLET & ELISABETH FARBU

13: Diagnostic tools / LAURA BERTOLASI, MD

14: Electrodiagnostic studies: What, When, Why, Why not? / ARZU ON, MD

15: Differential diagnosis / MARIANNE DE VISSER, MD

16: Rehabilitation assessment / FRANS NOLLET, MD

Questions and discussion

THURSDAY SEPTEMBER 1st 2011

09.00 – 10.00	<p>TRACK 1: FOR POLIO SURVIVORS / Location: Everest 1 / with translation</p> <p>RECENT RESEARCH & INITIATIVES Moderators: AADJE DE GROOT & KRISTIAN BORG</p> <p>20: Cycle to walk polio eradication / RAMESH FERRIS</p> <p>17: Australia's polio health and wellness retreat / MARY-ANN LIETHOF</p> <p>18: The warm embrace of peer support / ANNE SHANAHAN</p> <p>19: Disuse osteoporosis in the patients with post polio syndrome / JULIDE ÖNCÜ, MD</p>	<p>TRACK 2: FOR HEALTH CARE PROFESSIONALS / Location: Everest 2</p> <p>RECENT RESEARCH Moderators: JOHN MCFARLANE & JUDITH GLASER</p> <p>33: A needs based Rasch standard quality of life scale / ALLAN TENNANT, MD</p> <p>34: An exploration of different coping strategies / CAROLYN YOUNG, PSYCHOLOGIST</p> <p>35: Never second best? Shaping and reconstruction of identity / A.K. SCANKE, PSYCHOLOGIST</p> <p>36: Factors influence the quality of life of poliomyelitis / ANITA ATWAL, OT</p>	<p>TRACK 3: FOR HEALTH CARE PROFESSIONALS / Location: Loch Ness / 2nd floor</p> <p>RECENT RESEARCH Moderators: ANTONIO TONIOLO & FIEKE KOOPMAN</p> <p>44: Resistance training in combination with IVIG treatment / KATARINA SKOUGH, PT</p> <p>45: Intravenous immunoglobulin for post polio syndrome / LAURA BERTOLASI, MD</p> <p>46: Physiotherapy as part of a multi-disciplinary rehabilitation / SUSSE BROBERG, PT</p> <p>47 Home ventilator user survey / BARBARA ROGERS</p>
10.00 – 10.30	<p>COFFEE & EXHIBITION / POSTER VIEWING</p>		
10.30 – 12.00	<p>SYMPTOMS & MANAGEMENT 1 Moderators: LISE KAY & HOLGER KALLEHAUGE</p> <p>21: Orthopedic surgery in polio survivors / ANDERS STENSTRÖM, MD</p> <p>22: Anesthesia issues for polio survivors / SELMA CALMES, MD</p> <p>23: Respiration and sleep / MICHAEL LAUB, MD</p> <p>24: Speech and swallowing / SVEND PRYTZ, MD</p> <p>Questions and discussion</p>	<p>OUTCOME MEASURES Moderators: MARIANNE DE VISSER & ARZU ON</p> <p>37: International classification of functioning, disability and health / FRANS NOLLET, MD</p> <p>38: Muscle strength measurement / ANITA BEELEN, PhD</p> <p>39: Outcome measures for fatigue / GUNILLA ÖSTLUND, PSYCHOLOGIST</p> <p>40: Outcome measures for pain / TROELS STAEHELIN JENSEN, MD</p> <p>41: Outcome measures for physical functioning / MEREL BREHM, OT</p> <p>42: Outcome measures for participation and quality of life / KATHARINA SUNNERHAGEN, MD</p> <p>Questions and discussion</p>	<p>AGING Moderators: JÜLIDE ÖNCÜ & LAURA BERTOLASI</p> <p>48: General perspectives of aging / KIRSTEN AVLUND, OT</p> <p>32: Participation in society / JAN LEXELL, MD</p> <p>27: Impact of comorbidity, aging and lifestyle-related factors in polio survivors / IRENE TERSTEEG, MD</p> <p>31: Psychological aspects of polio survivors through their life experience / ALAIN YELNIK, MD</p> <p>Questions and discussion</p>
12.00 – 13.00	<p>LUNCH & EXHIBITION / POSTER VIEWING</p>		

13.00 – 14.30	<p>SYMPTOMS & MANAGEMENT 2 Moderators: KRISTIAN BORG & JOHN McFARLANE 25: Fatigue – Symptoms and management / GUNILLA ÖSTLUND, MD 26: Pain in polio survivors / KATHARINA SUNNERHAGEN, MD 27: Impact of comorbidity, aging and lifestyle- related factors in polio survivors / IRENE TERSTEEG, MD 28: Voiding and bowel problems / LISE KAY, MD Questions and discussion</p>	<p>SYMPTOMS & MANAGEMENT 1 Moderators: ALAIN YELNIK & ANTONIO TONIOLO 21: Orthopedic surgery in polio survivors / ANDERS STENSTRÖM, MD 22: Anesthesia issues for polio survivors / SELMA CALMES, MD 23: Respiration and sleep / MICHAEL LAUB, MD 24: Speech and swallowing / SVEND PRYTZ, MD Questions and discussion</p>	<p>MOBILITY Moderators: DEIDRE MURRAY & CHRISTINA BROGÅRDH 29: Falls among polio survivors / ALICE BICKERSTAFFE, MD 49: Leg orthoses for polio survivors: Numerous innovations, limited evidence / MEREL BREHM, PhD 50: A systematic seating assessment / ANNA-LENE HARTVIGSEN, PT Questions and discussion</p>
14.30 – 15.00	COFFEE & EXHIBITION / POSTER VIEWING		
15.00 – 16.30	<p>SYMPTOMS & MANAGEMENT 3 Moderators: ARZU ON & ELS SYMONS 29: Falls among polio survivors / ALICE BICKERSTAFFE, MD 30: Exercising for polio survivors / DEIDRE MURRAY, PT 31: Psychological aspects of polio survivors through their life experience / ALAIN YELNIK, MD 32: Participation in society / JAN LEXELL, MD Questions and discussion</p>	<p>SYMPTOMS & MANAGEMENT 2 Moderators: KRISTIAN BORG & LAURA BERTOLASI 28: Voiding and bowel problems / LISE KAY, MD 25: Fatigue – Symptoms and management / GUNILLA ÖSTLUND, MD 26: Pain in polio survivors / KATHARINA SUNNERHAGEN, MD 43: Managing the complexity in daily occupations / ANNA LISA THOREN JÖNSSON, OT Questions and discussion</p>	<p>EXERCISING Moderators: ANITA BEELEN & GUNNAR GRIMBY 51: Role of exercise / CARIN WILLÉN, PT 52: Role of aerobic exercises / JÜLIDE ÖNCÜ, MD 53: How to target aerobic exercise training in polio survivors / ERIC VOORN, MSC Questions and discussion</p>
16.40	<p>FILM: THE EPIDEMIC – I don't remember anything, but I'll never forget / Location: Lake Geneva, 2nd floor / 16.40 – 17.40 The film director NIELS FRANDSEN will present the film, and he will be ready for questions and debate after the screening. See page 14 for a description of the film</p>	<p>NETWORKING FOR HEALTH CARE PROFESSIONALS / 16.40 – 18.00 / Location: Loch Ness, 2nd floor Moderator: FRANS NOLLET How can we create a network in Europe for health care professionals? How can we spread the knowledge about polio and post polio syndrome to other health care pro- fessionals? Come and contribute with your ideas.</p>	
19.30	DINNER AT HOTEL CROWNE PLAZA / PRICE: 70 EURO / Location: Everest 1 & 2		

FRIDAY SEPTEMBER 2nd 2011

09.00 – 10.00	<p>ORTHOTICS / with translation / location: Everest 1 Moderators: FRANS NOLLET & MORTEN FENGER 54: Orthosis management / Dr. BARBARA BOCKER, MD 55: Light weight full contact carbon leg orthoses / KEES NOPPE, ORTHOTIST</p>	<p>RECENT RESEARCH / location: Everest 2 Moderators: JAN LEXELL & SUSSE BROBERG 56: Evaluation of the function of pelvic floor muscles / MIRCA OCANHAS, PT 57: Natural history the poliomyelitis and post polio syndrome in Brazil / ABRAHAO QUADROS, PT 58: Fatigue in patients with post polio syndrome / ANITA BEELEN, PhD 59: Experiences in daily occupations of immigrants with late effects of post polio / IOLANDA TAVARES, OT</p>
10.00 – 10.30	COFFEE & EXHIBITION / POSTER VIEWING	
10.30 – 12.00	<p>REHABILITATION / Plenary session / location: Everest 1 & 2 Moderators: GUNNAR GRIMBY & ALAIN YEKNIK 60: Rehabilitation in a public health perspective / CLAUD VINNTER NIELSEN, MD 61: Interdisciplinary teamwork / JAN LEXELL, MD 62: The value of investigating patient perspectives / KAREN SCHIPPER, PSYCHOLOGIST 63: Patient journey – My life with polio / SYLVI SALOMONSEN, POLIO SURVIVOR</p> <p>Questions and discussion</p>	
12.00 – 13.00	LUNCH & EXHIBITION / POSTER VIEWING	
13.00 – 15.00	<p>AWARENESS OF POST POLIO SYNDROME IN THE POLITICAL AND SOCIAL SYSTEM / Plenary session / location: Everest 1 & 2 Moderators: ROS SINCLAIR & PHILIP RENDTORFF 64: Post polio syndrome policy in the EU / HOLGER KALLEHAUGE, PRESIDENT OF PTU 65: Disability in the political arena / JOHN MCFARLANE 66: Cost effectiveness / KJELD MØLLER PEDERSEN, HEALTH ECONOMIST</p> <p>Questions and discussion</p> <p>Summary of the conference / FRANS NOLLET, MD Closure / JOHAN BIJTTEBIER, PRESIDENT OF EPU</p>	

FILM:

The EPIDEMIC – I don't remember anything, but I'll never forget

THURSDAY SEPTEMBER 1st 2011 / 16.40 – 17.40 /

Location: Lake Geneva, 2nd floor

In 1952 Denmark was in the throes of a polio epidemic. More than 6,000 people caught the disease, most of them children. Niels Frandsen, now a film director, was one year old when his hips and legs were affected. In this poetic film essay he returns to the fateful period that he cannot remember, but will never forget. His parents, his sister, and archive footage help him to furnish words and images for a personal account that is also a historical record. Today polio has been eradicated from Denmark, but several thousand people still live with the ravages it caused. The film has won several prizes all over the world.

The film director Niels Frandsen will present the film and he will be ready for questions and debate after the screening.

LANGUAGE

The film is in Danish with English subtitles. The film can be shown with other language subtitles after the English version, depending on which nationalities are present.



POSTER PRESENTATIONS

Numbers refers to summaries in supplement of Journal of Rehabilitation Medicine 2011; Suppl. 49: 1 – 64

SUMMARY 67: Analyses of sleep characteristics in Post-Polio Syndrome Patients

Tatiana Mesquita e Silva, PT

SUMMARY 68: Comparison of self-reported fatigue in Post-Polio Syndrome patients and age matched controls

Charlotte Lucy Taylor, Honorary Research Assistant

SUMMARY 69: New muscle weakness in the subclinically involved limbs in patients with poliomyelitis

Arzu Yagiz On, MD, Professor

SUMMARY 70: Relationship between lower limb muscle strength and gait performance in persons with post-polio syndrome

Ulla-Britt Flansbjerg, PhD, RPT; Christina Brogårdh, PhD, RPT; Jan Lexell, PhD, MD

SUMMARY 71: Relationships between objectively and subjectively assessed gait performance in persons with post-polio syndrome

Christina Brogårdh, PhD, PT, RPT

SUMMARY 72: The WHOQOL-BREF provides a valid measure of Quality of Life in Post Polio Syndrome (PPS)

Dr. Ian Pomeroy, Neurologist

SUMMARY 73: Post-polio syndrome and amyotrophic lateral sclerosis – similarities, differences and diagnostic dilemmas.

Ewa Matyja, PhD, MD; Milena Laure-Kamionowska, MD

SUMMARY 74: Validity and reliability of the Turkish version of Fatigue Severity Scale and Fatigue Impact Scale for Post Polio Syndrome

Julide Oncu, MD, Specialist on PM&R

SUMMARY 75: Concept of an interdisciplinary polio modul programme and therapy for polio

Ruetz Axel, MD

SUMMARY 76: Benefits and Techniques of Aquatic Therapy

Cynthia Henley, PT; Kathryn Wollam, PT

SUMMARY 77: Disabilities and working situation of immigrant with post-polio syndrome

Linda Hou, PhD, MD

SUMMARY 78: Experience with Younger Patients in a Post-Polio Clinic: A Case Series

Judith Glaser, DO, Physician

SUMMARY 79: Prescription of and satisfaction with the use of lower limb orthotic devices in persons with post-polio syndrome

Christina Espelund, RPT, MSc

SUMMARY 80: A guideline for the orthotic management in patients with severe weakness or paralysis of the lower extremities

Merel Brehm, PhD, Senior investigator

SUMMARY 81: Energy cost of Walking in Prior-polio Patients

Deirdre Murray, Clinical Specialist, PT

SUMMARY 82: Exercise therapy and cognitive behavioural therapy in Postpoliomyelitis Syndrome: The FACTS-2-PPS study

Fieke Koopman, MSc

SUMMARY 83: Voiding problems in a Danish population of polio survivors

Lise Kay, MD; Merete Bertelsen, PT

SUMMARY 84: Reported problems in relation to operation and anesthesia in a Danish population of polio survivors

Lise Kay, MD; Merete Bertelsen, PT

SUMMARY 85: Ventilatory threshold in PPS patients

Anita Beelen, PhD, Manager Research

SUMMARY 86: Results of 5-years of Lamotrigine treatment in patients with Post Polio Syndrome

Arzu Yagiz On, MD, Professor of PM&R

SUMMARY 87: Fractures in an aging population poliomyelitis survivors- Experience of the Post-Polio clinic In Israel

Alex Shapira, MD

SUMMARY 88: An exploration of fatigue from the perspective of people with Post Polio Syndrome

Samantha M Wong, Assistant Psychologist

SUMMARY 89: An exploration of the impact of Post Polio Syndrome on needs based quality of life

Anne-Marie C. Quincey, Assistant Psychologist

SUMMARY 90: A positive turning point in life. Experiences of a comprehensive interdisciplinary rehabilitation programme in persons with post-polio syndrome

Jan Lexell, PhD, MD, Physician

SUMMARY 91: Self-perceived impairments in persons with post-polio syndrome

Jan Lexell, PhD, MD, Physician

SUMMARY 92: Self-perceived participation restrictions in persons with post-polio syndrome before and after interdisciplinary rehabilitation

Jan Lexell, PhD, MD, Physician

SUMMARY 93: Occupations that persons with post-polio syndrome perceive difficult to perform in their daily life

Katja Appelin, Occupational Therapist, MSc

SUMMARY 94: A Brief History of Post-Polio in The United States

Lauro S. Halstead, MD

SUMMARY 95: Post Polio Syndrome in British Columbia, Canada

Joan Toone, President PPASS, BC

SUMMARY 96: Polio Services Victoria: An Australian Approach to Effective Care for Polio Survivors through a "Hub and Satellite" Model.

Blaise Doran, BSc (Hons), PT

SUMMARY 97: A Sociological Study: Failure of Polio Eradication Programme in India.

Ehtesham Akthar, MD, research scholar

SUMMARY 98: Post-Polio Syndrome: Situation in Spain and proposals for action

Jose M. Amate, PhD *; Carmen Bouza, PhD *; Zuleika Saz-Parkinson, PhD *; Maayken Van Den Berg, PhD #; Juan M. Castellote, PhD

SOCIAL EVENTS

CITY HALL RECEPTION

Wednesday August 31st at 18.00

The free City Welcome Reception takes place at Copenhagen City Hall and is arranged by the municipality of Copenhagen. They will serve the famous City Hall pancakes. Please register to this reception in the registration of the conference. Kindly bring your ticket received in the conference bag. Participants who have registered for shuttle bus will be transported to the City Hall at 17.00 from Hotel Crowne Plaza. Non disabled participants can take the train to Copenhagen Central Station and walk 5 minutes to the City Hall.



Please note that there is no shuttle bus back to the hotels.

Return to hotels:

- **Hotel Crowne Plaza:**

Take the train from Copenhagen Central Station to Ørestad Station (Direction: Malmø). The train is wheel chair accesible.

- **Hotel Clarion:**

Take bus number 30 from the Central Station

- **Hotel Wake UP:**

Walk to Tietgensgade at the end of Tivoli Gardens and take bus number 11 A. Or you can walk – it is a 16 minutes walk

- **Hotel DGI Byen:**

It is 12 minutes walk

Taxi for electric wheel chairs: Daniels Taxi, Tel: +45 40 82 45 06 (390 Danish kr. for the first 15 km + 60 kr. for each additional wheel chair user).

Regular taxi: Tel: +45 35 35 35 35

CONFERENCE DINNER

Thursday September 1st at 19.30 in Everest at Hotel Crowne Plaza Copenhagen Towers

A memorable highlight of the congress will be the Congress Dinner, that provides an ideal opportunity to mingle and meet other colleagues and polio survivors. The dinner includes 2 courses, coffee and either 2 glasses of wine, 2 beers or 2 soft drinks. More beverages can be bought in the cash bar. Tickets for the dinner can be bought when registering for the conference or at service desk, if tickets still are available. **PRICE: 70 EURO**

SIGHTSEEING IN COPENHAGEN BY BUS

Friday September 2nd at 15.30 to 18.00

Departure from congress venue and drop off at the 4 hotels mentioned at the registration site.

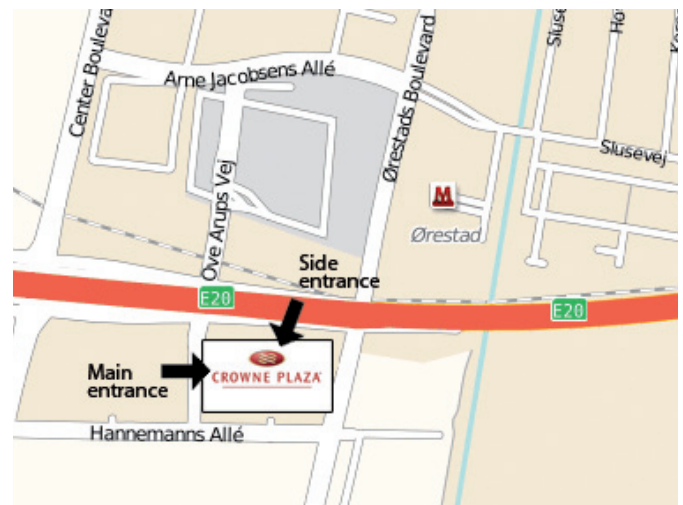
Tickets can be bought when you register. **PRICE: 35 EURO**

HOW TO REACH THE CONFERENCE VENUE

VENUE:

Hotel Crowne Plaza Copenhagen Towers
Ørestads Boulevard 114 - 118
DK 2300 Copenhagen S, Denmark,
Tel: +45 88 77 66 55
www.cpcopenhagentowers.dk

The main entrance is on the back on Ove Arups vej. Parking is under the hotel. 50 % discount for conference participants. For high cars contact the reception. Hotel Crowne Plaza Copenhagen Towers is located 150 meters from Ørestad Station.



FROM COPENHAGEN AIRPORT:

Take the train at the end of terminal 3 from platform 2 to Ørestad Station. (It is 2 stops and the destination of the train is Helsingør). The train is wheelchair accessible. There is a free airport shuttle bus between the terminals / see www.cph.dk.

If you are staying at the Hotel Crowne Plaza, there is a free shuttle bus to the hotel between 06.00 and 23.00. Contact the "Sixt Car Rental" in terminal 3, where you can order the transportation. Alternatively take a taxi, which takes 5 minutes. Taxi which can take an electrical wheel chair can be ordered at Daniels Taxi, Tel: +45 4082 4506 (390 kr. for the first 15 km + 60 kr. for each additional wheel chair user).

FROM COPENHAGEN CENTRAL STATION:

Take the train to Ørestad Station. It is the first stop and the destination of the train is Malmø. The train is wheelchair accessible.

PUBLIC TRANSPORTATION

You can buy tickets in ticket machines at all stations. If you will be travelling by train, bus or metro more than 5 times, you should buy a 10 trip ticket ("blåt klippekort") / 140 kr, which is valid for 2 zones for one hour. Remember to validate your ticket in the yellow machine on the platform/ in the bus. There is a map on the machine, where you can count how many zones your trip will pass (for 4 zones validate your ticket two times etc). There are 2 zones from the venue to Copenhagen city. The 10 trip ticket can be used by several people.



EUROPEAN POLIO CONFERENCE //
 COPENHAGEN DENMARK AUGUST 31 – SEPTEMBER 2, 2011

HELD BY THE EUROPEAN POLIO UNION // EPU
 AND THE DANISH SOCIETY OF POLIO AND ACCIDENT VICTIMS // PTU

